



**GLOBAL SKY**  
ENTERPRISES



**The Leading Hoodies Manufacturer For Top-Quality,  
Personalized Hoodies That Set Your Brand Apart.**

**Expert Craftsmanship, Premium Materials, And  
Personalized Hoodies - All In One Place**



[sales@globalskyent.com](mailto:sales@globalskyent.com)



[www.globalskyent.com](http://www.globalskyent.com)





**GLOBAL SKY**  
ENTERPRISES

# Company Profile

## OUR MISSION



Our mission is to always be a market leader in manufacturing, developing, innovating, and designing all types of hoodies products while satisfying the demands of our customers. Our objective is to make our manufacturing process an easy, fun, and exciting experience for our customers. To always exceed our customer's expectations by providing hoodies that excels in quality, design, looks, and premium feel.

## OUR VISIONS



Our vision is to revamp the process of developing and manufacturing textile products by eliminating the problems of manufacturing overseas. To be the most recognizable clothing manufacturer in a global market that excels in making world-class quality products and has the widest collection of apparel products. To make such an environment where people could learn, inspire and grow together.



 [sales@globalskyent.com](mailto:sales@globalskyent.com)  
 [www.globalskyent.com](http://www.globalskyent.com)







**GLOBAL SKY**  
ENTERPRISES

# CORE VALUES

## QUALITY



Customer satisfaction has always been our priority, we always try to deliver products that exceed our customer's expectations.

We are dedicated to provide top-notch quality products that are outstanding in every aspect, whether it's build quality, feel, or design.

## CUSTOMER SATISFACTION



Our team of professionals is always there to contribute to making new ideas and solving different problems that come our way. We are confident in our team that is always there to support.

## TEAMWORK



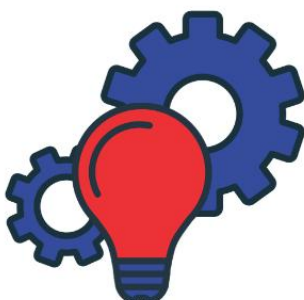
We believe honesty is the keystone of success, that's why we always strive to work with integrity and collaboratively to deliver the best quality products that we have promised.

## INTEGRITY



We work tirelessly to provide our customers with the most up-to-date and latest products. By making use of innovative manufacturing methods to attain better results and quality

## INNOVATION





**GLOBAL SKY**  
ENTERPRISES



## INTRODUCTION:

Global Sky Enterprises started as a clothing manufacturing company in Sialkot, Pakistan. Our aim was to deliver the finest-made clothing and textile products with the highest quality standards that are easily accessible to businesses at affordable price rates. Over the years with our persistent growth and hard work, we expanded our manufacturing capacity to another level and gained specialty in many clothing categories. We are proud to announce that Global Sky Enterprises is the leading manufacturer that can help any clothing business or brand to achieve its goals, establish its brand in the latest fashion industry, and get any type of fully customized and beautifully crafted medical clothing products.

## CERTIFICATIONS







# Our Commitment



## We Deliver 100% Quality

We manufacture hoodies products that are outstanding in the quality. It's our commitment to always deliver the best quality products that exceed our customer's expectations whether is stitching, embroidery, custom printing, build quality, fitting or luxurious look of the hoodies. Here's why we are always able to deliver 100% guaranteed quality products. With our:



**R&D (Research and Development) Facilities**



**5-Star Quality Management Systems.**



**Automated and Mechanized Manufacturing process.**

## Employee Benefits



### INCREMENT

We provide all our employees an increment of 10% from their date of joining. The salary is also increased depending on employee performance and hard work.



### LIFE INSURANCE POLICY

The life insurance policy is applicable to all our employees. All our employees are ensured and registered with social security and life insurance policy.



**GLOBAL SKY**  
ENTERPRISES

# What We Do ?

## PRIVATE LABEL HOODIES MANUFACTURING

We provide multiple services to our clients as we offer a variety of private-label hoodies in different fabrics and blends for your clothing line. With our diverse network, we help you broaden and prosper your manufacturing.

### Features of Our Private Label hoodies

#### Embroidery Patches



#### Lowest MOQs



#### Custom print



#### Private Labels



#### Premium fabric



#### Quality Guranteed







We are working tirelessly and striving to achieve new innovative methods, skills, and techniques that enable us to deliver maximum output and enhance production capacity. As we manufacture different types of Hoodies product, so the production capacity varies on the type of clothing product.

## Hoodies Production Capacity

Production Report

SR	HOODIES TYPE	DAILY PRODUCTION	MONTHLY PRODUCTION	ANNUAL PRODUCTION
1	Cotton Hoodies	300	7,800	93,600
2	Fleece hoodies	160	4,160	49,920
3	Polyester hoodies	200	5,200	62,400
4	Jersey hoodies	120	3,120	37,440
5	Nylon hoodies	230	5,980	71,760
6	French terry hoodies	80	2,080	24,960

We Have More Than **800** Hoodies Manufacturing **Machines** Including:

### Stitching Machines



### Embroidery machines.



### Automated cutting machines.



### Hydraulic cutting machines



### Embossing pressing machines.



### Different Sublimation machines.







**GLOBAL SKY**  
ENTERPRISES

## Other Services We Provides As Hoodie Manufacturer



### BESPOKE HOODIES MANUFACTURING



We offer the widest collection of apparel manufacturing options at competitive prices without compromising on quality.



### CUT AND SEW HOODIES MANUFACTURING



From pattern making to sewing the final product, we handle all the processes with great care and precision. That's why all our products are made with perfection.



### ALL TYPES OF HOODIES PRINTING



We provide different types of clothing printing using our latest technology. The printing options we offer include digital printing, sublimation printing, DTG printing, screen printing, and heat pressing.



### CUSTOM HOODIES EMBROIDERY



Our professional designers can help you craft any design you want for your custom clothing line. The number of these amazing and eye-catching embroidery designs is endless.



[sales@globalskyent.com](mailto:sales@globalskyent.com)



[www.globalskyent.com](http://www.globalskyent.com)





# Our Full Hoodies Manufacturing Process

## FABRIC SELECTION

The first step of the manufacturing process is the selection of fabric; we ensure to select the best fabric.. To check the quality of the fabric, several Quality Assurance methods are performed.



## FABRIC CUTTING

We do bulk fabric cutting with our latest automated and manual cutting machines. This procedure is done with very accuracy and care.



## PRIVATE LABELING

Before sending the product to the packing department, the product is reviewed, and labels are checked as per the criteria.



1



2

## CUSTOMIZATION

We have a team of professional designers. Their job is to customize the product of your choice, which includes printing, embroidery, and embossing, depending on the customer's required changes.

3



4

## HOODIES SEWING

After cutting, the fabric is neatly sewn by hand according to the customer's requirements. A professional team of tailors is there for this purpose.

5



6

## PACKAGING AND SHIPPING

Finally, our finest-made products are packed into boxes using automated packaging machines that are proficient to pack your products in no time.



**GLOBAL SKY**  
ENTERPRISES

# We Provides The Most Extensive List Of Color Options



New French Navy  
PMS 5395C



Oxford Navy PMS  
533C



Navy Smoke PMS  
533C



Ink Blue  
PMS 19-4033 TCX



Denim Blue PMS  
534C



Airforce Blue PMS  
5405C



Royal Blue PMS  
661C



Sapphire Blue  
300C



PMSTropical Blue  
PMS 285C



Dusty Blue  
PMS 17-4021 TCX



Hawaiian Blue  
PMS 2995C



Turquoise Surf  
PMS 311C



Cornflower  
Blue PMS 659C



Sky Blue PMS  
644C



Deep Sea Blue  
PMS 3035C



Jade  
PMS 329C



Peppermint  
PMS 3242C



Forest Green  
PMS 627C



Bottle Green PMS  
554C



Olive Green PMS  
448C



Combat Green PMS  
19-0509 TCX



Moss Green PMS  
561C



Kelly Green PMS  
347C



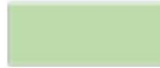
Spring Green PMS  
339C



Alien Green  
PMS 15-0545TCX



Lime Green  
PMS 15-0146TCX



Apple Green PMS  
358C



Hot Chocolate  
PMS 440C



Caramel Toffee PMS  
18-1031 TCX



Mocha Brown PMS  
7531CP



Desert Sand PMS  
7502C



Nude  
PMS 4665C



Peach Perfect  
PMS 489C



Vanilla Milkshake  
PMS 7499C



Sherbet Lemon  
PMS 120C



Sun Yellow PMS  
109C



Gold  
PMS 136C



Mustard PMS  
1245C



Orange Crush  
PMS 1505C



Burnt Orange PMS  
173C



Sunset Orange  
PMS 179C



Red Hot Chilli  
PMS 1945C



Brick Red PMS  
202C



Fire Red PMS  
200C



Burgundy PMS  
7421C



Burgundy Smoke  
PMS 7428C



Plum  
PMS 511C



Dusty Purple  
PMS 17-1610 TCX



Wild Mulberry  
PMS 7666C



Purple  
PMS 2617C



Ultra Violet PMS  
2685C



Magenta Magic  
PMS 258C



Pinky Purple  
PMS 674C



Lavender PMS  
2563C



True Violet  
PMS 271C



Cranberry PMS  
215C



Hot Pink PMS  
214C



Lipstick Pink PMS  
191C



Candyfloss Pink  
PMS 204C



Dusty Pink PMS  
500CP



Baby Pink PMS  
1895C



Deep Black  
PMS Black



Jet Black PMS  
Black



Black Smoke  
PMS 19-3902TCX



Storm Grey  
PMS Black 7C



Charcoal  
PMS 18-5210TCX



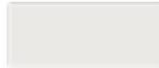
Steel Grey PMS  
425C



Moondust Grey  
PMS 428CP



Heather Grey  
PMS Cool Gray 5C



Ash  
PMS Cool Gray 2 Up



Arctic White  
PMS White



[sales@globalskyent.com](mailto:sales@globalskyent.com)



[www.globalskyent.com](http://www.globalskyent.com)







**GLOBAL SKY**  
ENTERPRISES

# A Never Ending List Of Stunning Colors

Denim Blue	Airforce Blue	Royal Blue	Sapphire Blue
Tropical Blue	Dusty Blue	Hawaiian Blue	Turquoise Surf
Corn over Blue	Sky Blue	Deep Sea Blue	Jade
Pepper mint	Forest Green	Bottle Green	Olive Green
Combat Green	Moss Green	Kelly Green	Spring Green
Alien Green	Lime Green	Apple Green	Hot Chocolate
Caramel Toffee	Mocha Brown	Desert Sand	Nu de
Peach Perfect	Vanilla Milkshake	Sherbet Lemon	Sun Yellow
Gold	Mustard	Orange Crush	Burnt Orange
Sunset Orange	Red Hot Chilli	Brick Red	Fire Red
Burgundy	Burgundy Smoke	Plum	Dusty Purple
Wild Mulberry	Purple	Ultra Violet	Magenta
Pinky Purple	Lavender	True Violet	Magic Cranberry
Hot Pink	Lipstick Pink	Candy oss Pink	Dusty Pink
Baby Pink	Deep Black	Jet Black	Black Smoke
Storm Grey	Charcoal	Steel Grey	Moondust Grey
Heather Grey5XL	Ash	Arctic White	



## Key Features

- 72 great colours
- Twin needle stitching detail
- Double fabric made hoodies

## Speci cation

- 80% ringspun cotton 20% polyester
- 70% ringspun cotton 30% polyester (Smoke colour s )
- 280gsm



[sales@globalskyent.com](mailto:sales@globalskyent.com)



[www.globalskyent.com](http://www.globalskyent.com)





## Lets Explore Our Diverse hoodies Collection

### Table Of Contents

**No1:** Hoodies Colors Options

**No2:** Fabrics we use for hoodies

**No3:** Women Hoodies

**No4:** Men Hoodie

**No5:** Unisex Hoodies

**No6:** Wholesale Hoodies

**No7:** Special Offers to  
Wholesale customers

**No8:** Fleece wholesale hoodies

**No9:** French Terry hoodies

**Looking for high-quality  
and customizable hoodies  
for your brand or  
business? Look no further  
than our comprehensive  
hoodies manufacturing  
catalog!**



[sales@globalskyent.com](mailto:sales@globalskyent.com)



[www.globalskyent.com](http://www.globalskyent.com)





## We Offers A Whole Range OF Supreme Quality Fabrics

As a hoodie manufacturer, we understand that fabric selection is crucial in creating comfortable, stylish, and long-lasting hoodies. Here is a rundown of the fabric options we offer and their features:

### Fabric Options

#### Cotton:



A breathable, natural fabric that is comfortable against the skin. It is easy to care for and durable, making it a great option for everyday wear.



#### Polyester:



A synthetic fabric that is moisture-wicking, wrinkle-resistant, and durable. It dries quickly and is easy to care for, making it ideal for sports and outdoor activities.

#### Fleece:



A soft, fluffy fabric that is warm and cozy. It is often made from polyester and is commonly used in casual wear and activewear.

#### Spandex:



A stretchy, synthetic fabric that is often blended with other fabrics to provide flexibility and shape retention. It is commonly used in activewear and form-fitting clothing.

#### Wool:



A natural fabric that is known for its warmth and moisture-wicking properties. It is durable and easy to care for, making it a great choice for winter wear.

#### Nylon:



A strong, synthetic fabric that is water-resistant and windproof. It is often blended with other fabrics to provide added protection and durability.

#### Rayon:



A lightweight, breathable fabric that is made from plant-based materials. It is soft and comfortable to wear, making it a great option for loungewear and casual wear.



**GLOBAL SKY**  
ENTERPRISES

# Hoodies For Women



**Womens Hoodies Wholesale; Designed For The  
Modern Woman**

**Adorn your clothing line with our wholesale women's  
hoodies, the epitome of style and quality.**



[sales@globalskyent.com](mailto:sales@globalskyent.com)



[www.globalskyent.com](http://www.globalskyent.com)







**GLOBAL SKY**  
ENTERPRISES

# Ladies Zip-Up hoodies



## Key Features:

- Girlie fit
  - Covered main plastic zip
  - Twin needle stitching detail •
- Double fabric hood



## Color Options



 [sales@globalskyent.com](mailto:sales@globalskyent.com)

 [www.globalskyent.com](http://www.globalskyent.com)



**GLOBAL SKY**  
ENTERPRISES

# Women Zip-up Hoodies Hoodies



## Color Options:

- |   |                           |   |                          |
|---|---------------------------|---|--------------------------|
|  | Oxford Navy Burgundy      |  | Oxford Navy Heather Grey |
|  | Burgundy Charcoal         |  | Baby Pink Heather Grey   |
|  | Jet Black Gold            |  | Jet Black Sapphire Blue  |
|  | Jet Black Fire Red        |  | Charcoal Jet Black       |
|  | Heather Grey Jet Black    |  | Solid Black Black Camo   |
|  | Arctic White Jet Black    |   |                          |
|  | Solalick Green Green Camo |   |                          |



## Key Features

Our best selling hoodie year after year is light, comfy, and super-soft on the inside. Ultra-soft, mid-weight cotton-blend fleece with brushed interior for extra warmth. Your choice in 44 colors.





**GLOBAL SKY**  
ENTERPRISES

# Ladies Cross Back Hoodie



## Color Options



Jet  
Black



Sports  
Grey



Arctic  
White

- Ultimate 4-way stretch for ease of movement
- Unique cross back styling
- Attached two panel hood
- Cropped length
- Flattering dropped curved hem at front
- Simple tearout label, perfect for re-branding
- Wicking quick dry fabric
- Self fabric cuffs and hem
- Flat lock stitching
- UPF 40+ UV protection



[sales@globalskyent.com](mailto:sales@globalskyent.com)



[www.globalskyent.com](http://www.globalskyent.com)

# Ladies Sherpa Cozy Fashion Fleece Hoodie



## Color Options:

	Oxford Navy Burgundy		Oxford Navy Heather Grey
	Burgundy Charcoal		Baby Pink Heather Grey
	Jet Black Gold		Jet Black
	Jet Black Fire Red		Sapphire Blue
			Charcoal Jet Black



## Key Features:

- Ultra-soft meets cozy warmth in this layerable sherpa fleece hoodie.
- Ideal for cooler days, it's comfortable, versatile and designed to fend off the chill in style.
- 6.8-ounce, 100% polyester sherpa fleece, Three-panel hood, Drop shoulder, Open cuffs and hem





**GLOBAL SKY**  
ENTERPRISES

# Casual Women Hoodies

## Color Options:

	Oxford Navy		Oxford Navy Heather Grey
	Burgundy		Baby Pink
	Charcoal		Heather Grey
	Jet Black		Jet Black
	Gold		Sapphire Blue
	Fire Red		Charcoal Jet Black
	Charcoal		Heather Grey Jet Black
	Heather Grey		Solid Black Black
	Arctic white		Camo
	Jet black		
	Solalick Green		
	Green		
	Camo		



## Key Features

- 31 great colours
- Girlie fit
- Twin needle stitching detail
- Double fabric hood

# Women Pullover Hoodies

## Features:

50% cotton/50% poly with up to 5% recycled poly from plastic bottles double Dry technology wicks moisture, Two-ply hood with dyed-to-match drawcords, Covered lacket, 1x1 rib knit sleeve cuffs and hem, Front pouch pocket, Embroidered Champion "C" ogo at left cuff, Woven back neck label



- 40 great colours
- Girlie fit
- Twin needle stitching detail
- Double fabric hood





**GLOBAL SKY**  
ENTERPRISES

## Hoodies For Men



**Delight Your Customers with Our Comfortable and Stylish Mens Hoodies**

**Outfit Your Business With Our Trendy Mens Hoodies And See The Difference In Sales**



 [sales@globalskyent.com](mailto:sales@globalskyent.com)  
 [www.globalskyent.com](http://www.globalskyent.com)





**GLOBAL SKY**  
ENTERPRISES

# SupaSoft Mens Hoodies

## Key Features

- Twin needle stitching detail
- 3 panel double fabric hood
- Soft feel peached cotton faced fabric



## Color Options

- |               |                 |
|---------------|-----------------|
| ● Supa Navy   | ● Supa Royal    |
| ● Supa Purple | ● Supa Burgundy |
| ● Supa Red    | ● Supa Hot Pink |
| ● Supa Black  | ● Supa Charcoal |
| ● Supa Grey   |                 |





**GLOBAL SKY**  
ENTERPRISES

# Zip-up Mens Hoodie

## Color Options



Navy  
Navy Melange



Black  
Black Slate Melange



Grey  
Grey Melange

## Key Features:

- Dual weight blended polyester fabric
- Raglan sleeves
- Contrast melange sleeves
- Active fit
- Scooped hem at back
- Wicking quick dry fabric
- Attached adjustable hood
- Kangaroo pocket
- Full front zip
- Thumb-holes



We offer industry-leading designs, including sketches and technical packs, to reduce the risk of misinterpretation and to perk up production processes.



[sales@globalskyent.com](mailto:sales@globalskyent.com)



[www.globalskyent.com](http://www.globalskyent.com)





**GLOBAL SKY**  
ENTERPRISES

# Baseball Mens Hoodies

## Specification:

- 80% ring spun cotton  
20% polyester
- 280gsm
- Kids' sizes pg. 127



## Key Features

- Twin needle stitching detail
- Contrast raglan sleeves and drawcords
- Contrast double fabric hood

## Color Options



[sales@globalskyent.com](mailto:sales@globalskyent.com)



[www.globalskyent.com](http://www.globalskyent.com)







**GLOBAL SKY**  
ENTERPRISES

# Cosmic Blend Mens Hoodie

## Color Options



Cosmic Navy  
White



Cosmic Blue  
Black



Cosmic Red  
Black



Cosmic Black  
White



Cosmic Grey  
Black

## Key Features:

- Twin needle stitching detail
- Double fabric hood
- All over melange effect fabric

## Specification:

- 70% ringspun cotton  
30% polyester
- 280gsm



[sales@globalskyent.com](mailto:sales@globalskyent.com)



[www.globalskyent.com](http://www.globalskyent.com)





**GLOBAL SKY**  
ENTERPRISES

# Graduate Heavyweight Men Hoodie

## Key Features:

- Heavyweight hoodie
- Twin needle stitching detail
- 3 panel fabric hood with single jersey fabric inner



## Color Options

	New French Navy		Royal Blue
	Bottle Green		Fire Red
	Burgundy		Purple
	Jet Black		Charcoal
	Heather Grey		Arctic White







**GLOBAL SKY**  
ENTERPRISES

# Unisex Hoodies



**Unisex Hoodies: The Perfect Hoodie for Any Customer  
on Your List.**

**Hoodies for him, hoodies for her - unisex for all**



[sales@globalskyent.com](mailto:sales@globalskyent.com)



[www.globalskyent.com](http://www.globalskyent.com)





**GLOBAL SKY**  
ENTERPRISES

# Unisex Heather Hoodies

## Key Features:

- Slim fit lightweight hoodie
- Soft feel lightweight fabric
- Twin needle stitching detail



## Color Options



Black Heather



Grey Heather



Navy Heather



Purple Heather





**GLOBAL SKY**  
ENTERPRISES

# Unisex CrossNeck Hoodie



## Color Options



Oxford  
Navy



Nude



Baby  
Pink



Jet Black



Black  
Smoke



Charcoal



Heather  
Grey

## Key Features:

- Heavyweight hoodie
- Cross over neck detail
- Twin needle stitching detail
- Three panel double fabric hood
- Thumb holes in the cuffs



[sales@globalskyent.com](mailto:sales@globalskyent.com)



[www.globalskyent.com](http://www.globalskyent.com)



**GLOBAL SKY**  
ENTERPRISES

# Unisex Contrast Hoodie

## Key Features:

- Twin needle stitching detail
- Double fabric hood with contrast inner
- 80% Ringspun Cotton 20% Polyester



	New French Navy Sky Blue		New French Navy Fire Red
	New French Navy Heather Grey		Royal Blue Arctic White
	Sapphire Blue Heather Grey		Kelly Green Arctic White
	Fire Red Jet Black		Fire Red Arctic White
	Burgundy Charcoal		Purple Sun Yellow
	Jet Black Gold Jet		Jet Black Orange Crush
	Black Fire Red		Jet Black Heather Grey
	Charcoal Jet Black		Heather Grey French Navy





**GLOBAL SKY**  
ENTERPRISES

# Unisex Surf Hoodie



## Color Options



Surf Blue



Surf Ocean



Surf Pink



Surf Purple



Surf Yellow

## Key Features:

- Twin needle stitching detail
- Melange effect fabric
- Relaxed fit
- Double fabric hood



[sales@globalskyent.com](mailto:sales@globalskyent.com)



[www.globalskyent.com](http://www.globalskyent.com)





**GLOBAL SKY**  
ENTERPRISES

# Textured Full-Zip Fleece Hoodie



## Color Options



Oxford Navy



Nude



Baby Pink



Jet Black



Black Smoke



Charcoal



Heather Grey

## Key Features:

- Stay warm and keep your performance high when temps are low.
- Design details include a hood with drawcord, secure zippered pockets and elastic trim at the cuffs and hem for a comfortable fit.
- A contrast heat transfer Swoosh design trademark is on the left chest.
- Made of 7-ounce, 100% polyester



[sales@globalskyent.com](mailto:sales@globalskyent.com)



[www.globalskyent.com](http://www.globalskyent.com)





**GLOBAL SKY**  
ENTERPRISES

# Camo Women Hoodies

## Key Features:

- Twin needle stitching detail
- Double fabric hood with contrast inner



## Color Options



New French Navy  
Sky Blue



New French Navy  
Heather Grey



Sapphire Blue  
Heather Grey



Fire Red  
Jet Black



Burgundy  
Charcoal



New French Navy  
Fire Red



Royal Blue  
Arctic White



Kelly Green  
Arctic White



Fire Red  
Arctic White



Purple  
Sun Yellow



[sales@globalskyent.com](mailto:sales@globalskyent.com)



[www.globalskyent.com](http://www.globalskyent.com)



**GLOBAL SKY**  
ENTERPRISES

# Camo Men Hoodies



## Key Features:

- Stay warm and keep your performance high when temps are low.
- Design details include a hood with drawcord, secure zippered pockets and elastic trim at the cuffs and hem for a comfortable fit.
- A contrast heat transfer Swoosh design trademark is on the left chest.
- Made of 7-ounce,



## Color Options



New French Navy Sky Blue



New French Navy Fire Red



New French Navy Heather Grey



Royal Blue Arctic White



Sapphire Blue Heather Grey



Kelly Green Arctic White



Fire Red Jet Black



Fire Red Arctic White





**GLOBAL SKY**  
ENTERPRISES

# Vintage Hoodies

## Key Features:

- Twin needle stitching detail
- Double fabric hood with contrast inner



## Color Options

 New French Navy Sky Blue	 New French Navy Fire Red
 New French Navy Heather Grey	 Royal Blue Arctic White
 Sapphire Blue Heather Grey	 Kelly Green Arctic White
 Fire Red Jet Black	 Fire Red Arctic White
 Burgundy Charcoal	 Purple Sun Yellow
 Jet Black Gold Jet	 Jet Black Orange Crush
 Black Fire Red	 Jet Black Heather Grey
 Charcoal Jet Black	 Heather Grey French Navy



[sales@globalskyent.com](mailto:sales@globalskyent.com)



[www.globalskyent.com](http://www.globalskyent.com)



**GLOBAL SKY**  
ENTERPRISES

# Tie-Dye Hoodie



## Color Options



Oxford Navy



Nude



Baby Pink



Jet Black



Black Smoke



Charcoal



Heather Grey

## Key Features:

- Stay warm and keep your performance high when temps are low.
- Design details include a hood with drawcord, secure zippered pockets and elastic trim at the cuffs and hem for a comfortable fit.
- A contrast heat transfer Swoosh design trademark is on the left chest.
- Made of 7-ounce,



[sales@globalskyent.com](mailto:sales@globalskyent.com)



[www.globalskyent.com](http://www.globalskyent.com)





**GLOBAL SKY**  
ENTERPRISES

# Unisex Tie Dye Hoodies

## Key Features:

- Twin needle stitching detail
- Melange effect fabric
- Relaxed fit
- Double fabric hood



## Color Options



Surf Blue



Surf Ocean



Surf Pink



Surf Purple



Surf Yellow



[sales@globalskyent.com](mailto:sales@globalskyent.com)



[www.globalskyent.com](http://www.globalskyent.com)

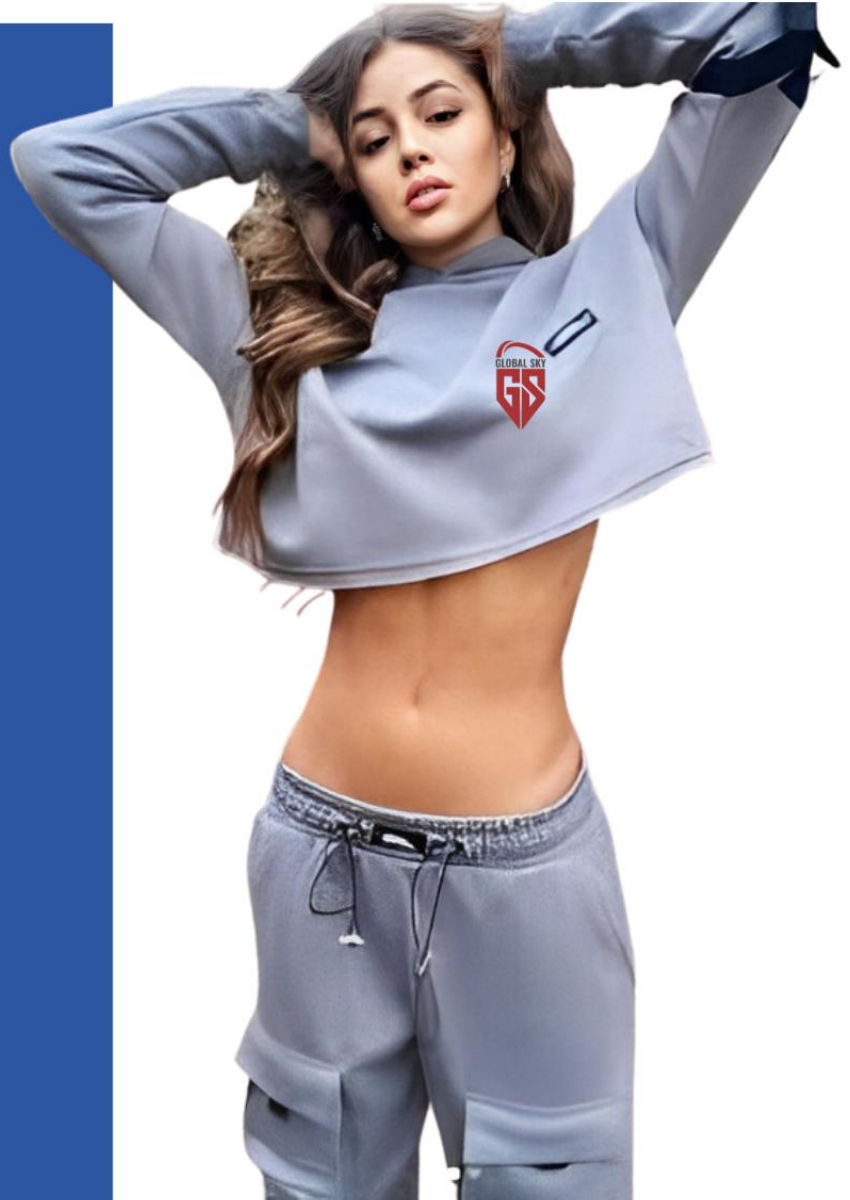


**GLOBAL SKY**  
ENTERPRISES

# Cropped Hoodies

## Key Features:

- Twin needle stitching detail
- Double fabric hood with contrast inner



## Color Options



Oxford  
Navy



Baby  
Pink



Black  
Smoke



Heather  
Grey



Nude



Jet Black



Charcoal





**GLOBAL SKY**  
ENTERPRISES

# Fleece Pullover Hoodies



Royal



Heather Royal



Scarlet



Silver Grey



Dark Green



Light Steel



Maroon



Navy

## Key Features:

50% cotton/50% poly with up to 5% recycled poly from plastic bottles double Dry technology wicks moisture, Two-ply hood with dyed-to-match drawcords, Covered lacket, 1x1 rib knit sleeve cuffs and hem, Front pouch pocket, Embroidered Champion "C" go at left cuff, Woven back neck label



[sales@globalskyent.com](mailto:sales@globalskyent.com)



[www.globalskyent.com](http://www.globalskyent.com)





**GLOBAL SKY**  
ENTERPRISES

# Full-Zip Pro Fleece Hoodie



## Key Features:

50% cotton/50% poly with up to 5% recycled poly from plastic bottles  
Double Dry technology wicks moisture, Two-ply hood with dyed-to-match drawcords,  
Covered pocket, 1x1 rib knit sleeve cuffs and hem, Front pouch pocket, Embroidered  
Champion "C"  
tag at left cuff, Woven back neck label



[sales@globalskyent.com](mailto:sales@globalskyent.com)



[www.globalskyent.com](http://www.globalskyent.com)







**GLOBAL SKY**  
ENTERPRISES

# Full-Zip Pro Fleece Hoodies



## Key Features:

- The design includes a three-panel hood with drawcords, front pouch pockets and open cuffs.
- Tailored for a feminine fit with a drop tail hem.
- The contrast heat transfer Swoosh design trademark is on the left sleeve.
- Made of 7-ounce, 100% polyester Therma-FIT fabric.



[sales@globalskyent.com](mailto:sales@globalskyent.com)



[www.globalskyent.com](http://www.globalskyent.com)





**GLOBAL SKY**  
ENTERPRISES

# Full-Zip Pro Fleece Hoodies



## Key Features:

- The design includes a three-panel hood with drawcords, front pouch pockets, and open cuffs
- Tailored for a feminine fit with a drop tail hem.
- The contrast heat transfer Swoosh design trademark is on the left sleeve. Made of 7-ounce, 100% polyester Therma-FIT fabric.



[sales@globalskyent.com](mailto:sales@globalskyent.com)



[www.globalskyent.com](http://www.globalskyent.com)







**GLOBAL SKY**  
ENTERPRISES

# French Terry Hoodies



**Stay Ahead of the Competition with French Terry Hoodies**

**“French terry wholesale Hoodies; The Ultimate Winter Essential for Every Business.”**



 [sales@globalskyent.com](mailto:sales@globalskyent.com)  
 [www.globalskyent.com](http://www.globalskyent.com)





**GLOBAL SKY**  
ENTERPRISES

# French Terry Hoodies Wholesale



## Key Features:

- With perfect tri-blend softness, this hoodie is versatile and comfortable.
- 8.3-ounce, 61/31/8 ring spun cotton/poly/rayon,
- French terry
- Unlined hood, Natural drawcord
- back neck tape and zipper tape,
- YKK metal zipper, Front and back seaming, Elongated length, Front pockets ,



[sales@globalskyent.com](mailto:sales@globalskyent.com)



[www.globalskyent.com](http://www.globalskyent.com)







**GLOBAL SKY**  
ENTERPRISES

# French Terry Hoodies



## Key Features:

- With perfect tri-blend softness, this hoodie is versatile and comfortable.
- 8.3-ounce, 61/31/8 ring spun cotton/poly/rayon,
- French terry, Unlined hood
- Natural drawcords, back neck tape, and zipper tape,
- YKK metal zipper,
- Front and back seaming, Elongated length, Front pockets ,



[sales@globalskyent.com](mailto:sales@globalskyent.com)

[www.globalskyent.com](http://www.globalskyent.com)





# CONTACT US



Global Sky Enterprises

Post Office, Ramagarh, Aimanabad Road, Sialkot 51310 - Pakistan



+92 334 8028130



[sales@globalskyent.com](mailto:sales@globalskyent.com)



[www.globalskyent.com](http://www.globalskyent.com)

Note: If you need any modification or alteration in design, please feel free to contact us



E: [sales@globalskyent.com](mailto:sales@globalskyent.com) | W: [www.globalskyent.com](http://www.globalskyent.com)

Global Sky Enterprises | Post Office, Ramagarh, Aimanabad Road, Sialkot 51310 - Pakistan | M: +92 334-8028130